



ANNUAL REPORT 2024

Office of the Marijuana Commissioner

Email: OMC@delaware.gov

Tel: (302) 244 – 3662

Website: OMC.delaware.gov

1128 South Bradford Street Dover, DE 19904

Commissioner Rob Coupe

Deputy Commissioner Paul Hyland

Table of Contents

Executive Summary	3
Legislative Initiatives.....	3
Stakeholder Engagement	4
Oversight Committee	4
Appeals Commission	6
Municipalities	6
Chambers of Commerce	7
Delaware Technical Community College	7
Illicit Market v. Regulated Market: Testing Initiative.....	7
Rules of the Office of the Marijuana Commissioner	8
Informal Posting.....	8
Formal Posting.....	8
Licensing.....	8
Standard Licenses	8
Demographics	9
Revenue Generated.....	10
Conversion Licenses	11
Social Equity Licenses.....	12
DIA Map:	12
Social Equity Workshops:.....	12
Social Equity Validation Process:	12
Social Equity Grant Program	13
Medical Marijuana Program	14
Identification Cards: Applications and Renewals.....	15
Patients & Designated Caregivers	15
Compliance Activities.....	18
Participating Physicians	18
Sales Data.....	20
Capacity	21
Federal Legislative Landscape.....	21
Rescheduling.....	21

Banking 21
Conclusion 21
MEDIA ADDENDUM..... 23

Executive Summary

In 2024, the Office of the Marijuana Commissioner (OMC) made significant progress, guided by key legislative changes and strong partnerships. The General Assembly passed several important bills to facilitate the licensing process, allow medical marijuana operators to enter the adult-use market, and merge the Office of Medical Marijuana (OMM) with OMC. These efforts streamlined operations and supported the social equity program.

OMC worked closely with various government and industry stakeholders, offering educational initiatives and hosting workshops to ensure a smooth implementation of the combined medical and adult-use market. The Marijuana Control Act Oversight Committee (Oversight Committee) plays a key role in evaluating and ensuring the integrity of the market.

OMC leveraged an online portal to receive applications, implement a lottery process, and assist with licensing processes. The application process produced 1,271 applications in 2024, generating \$4.7 million in application and license fees. OMC placed a special emphasis on social equity licenses, aiming to provide opportunities for those impacted by past marijuana laws.

The Medical Marijuana Program (MMP) continued to serve patients, though new applications decreased slightly, and fortunately no patient cards were revoked due to compliance issues.

Financially, MMP generated over \$1 million in revenue, with a focus on covering operational expenses to support continued growth. Overall, 2024 was a year of transition and development, setting the stage for a more inclusive and regulated marijuana industry in Delaware.

Legislative Initiatives

OMC worked closely with Representative Ed Osienski and Senator Trey Paradee on a series of bills that focused on creating a fair licensing process that avoided the common pitfalls other states encountered forming an adult-use market. The following legislation played a pivotal role in shaping the work and priorities of OMC over the past year, significantly influencing its operations and objectives:

- [HB334](#) w/ [HA1](#) – Technical Fix bill – HB334 was a cleanup bill to the original HB2 from the 153rd General Assembly. This bill allowed OMC to implement the licensing process, reinforce the social equity program, and support the OMC Regulations. Signed into law July 17, 2024.
- [HB408](#) w/HA1 and HA2 – The OMM license conversion bill allowed medical marijuana licensees to apply for a license in the adult-use market and supported the social equity program with fees generated by converting the medical businesses. Signed into law July 17, 2024.
- [HB425](#) – Merged OMM with OMC. Centralizing all marijuana policy decisions under the Department of Safety and Homeland Security (DSHS) will make a more cohesive program and leverage the experience of the medical marijuana regulators. Signed into law July 17, 2024.

- [HB285](#) – Modifications to the OMM patient qualifications. Signed into law May 28, 2024.

Stakeholder Engagement

OMC established relationships with government and non-government agencies, by collectively working together to transition from a medical marijuana program to a combined medical and adult-use program.

Department of Agriculture	Division of Public Health	Best Buds
Delaware State University	Public Health Lab	Valor Cannabis
Office of the State Treasurer	Department of Finance	Delaware Banker's Association
Department of Technology and Information	Division of Revenue	Delaware Cannabis Industry Association
Division of Small Business	Department of Justice	Cannabis Regulators Association
Office of Highway Safety	Justice of the Peace Courts	Addiction Action Committee
Delaware State Police	Other Governmental	External and NGO Partners
Delaware Justice Information System	Maryland Cannabis Administration	NCC Chamber of Commerce
Criminal Justice Council	New Jersey Cannabis Control Board	Delaware Black Chamber of Commerce
Government Information Center	Marijuana Control Act Oversight Committee	Delaware Bar Association
Office of Management & Budget/GSS	Marijuana Industry Partners	Delaware Cannabis Advocacy Network
Office of the Child Advocate	NCS Analytics	Delmarva Power and Light
Division of Alcohol and Tobacco Enforcement	High Tide Lab	American Society for Testing and Materials (ASTM)
Marijuana Appeals Commission (DE)	First State Compassion	Delaware Pharmacists Society
Office of Management & Budget/Planning	Columbia Care	SUD Support Groups (Treatment & Prevention)
Child Protection Accountability Commission	Fresh Delaware	Cannabis Regulators Association (CANNRA)
	The Farm	League of Local Governments

Oversight Committee

The enabling legislation that created OMC also created the Oversight Committee. The Oversight Committee meets at least twice each year to evaluate issues related to product safety, consumer supply and to make recommendations to the Governor, the General Assembly, DSHS, and the Marijuana Commissioner concerning the effect of the Marijuana Control Act on public safety and health.

The 15 members of the Marijuana Oversight Act Committee include:

DSHS Secretary or designee appointed by the Secretary:

Deputy Secretary Kimberly Chandler

Director of the Division of Revenue, or designee:

Director Kathy Revel

Director of the Division of Public Health, or designee:

Deputy Director Rebecca Walker

Director of the Division of Substance Abuse and Mental Health, or designee:

Director Joanna R. Champney

Director of the Delaware Medical Marijuana Program, or designee:

Director Joseph Schlimer

Chief Diversity Officer of the Division of Diversity, Equity and Inclusion, or designee:

Chief Richard Potter

Director of the Division of Small Business, or designee:

Director Regina Mitchell

One member of the House of Representatives, appointed by the Speaker of the House:

Representative Edward Osienki

One member of the Senate, appointed by the President Pro Tempore of the Senate:

Senator Trey Paradee

Delaware State Senate Appointed Marijuana Advocates:

Richard Jester, New Castle County

Zoë Patchell, Kent County

Brett Conaway, Sussex County

House of Representatives Appointed Marijuana Advocates:

Laura Sharer, New Castle County

Adam Windett, Kent County

Jene Duffy, Sussex County

In 2024, the Oversight Committee held 4 meetings:

February 21, 2024: [Meeting agenda and minutes](#)

May 1, 2024: [Meeting agenda and minutes](#)

September 4, 2024: [Meeting agenda and minutes](#)

November 25, 2024: [Meeting agenda and minutes](#)

On May 1, 2024, the Oversight Committee created the Health and Safety Subcommittee to make recommendations to it related to health and safety of adult-use marijuana products.

The 9 members of the Health and Safety Subcommittee include:

Jene Duffy (Chair)	Laura Sharer
Rich Jester	Rebecca Walker
Zoe Patchell	Amy Herb
Claire Washington	George Class-Peters
John Yeomans	

In 2024, the Health and Safety Subcommittee held 2 meetings:

August 7, 2024: [Meeting agenda and minutes](#)

December 18, 2024: [Meeting agenda and minutes](#)

Appeals Commission

The Appeals Commission was created in 4 *Del. C.* § 1321 and includes 3 Governor appointed members confirmed by the Senate. The 3-member Appeals Commission consists of one member from each county and will meet to hear and consider certain appeals of the Marijuana Commissioner’s decisions. In 2024, the Appeals Commission participated in a tour of marijuana facilities. There have been no official appeals hearings to date.

The Honorable William L. Chapman, Jr.	New Castle County
Reverend Rita M. Paige	Kent County
Michael Houghton, Esquire	Sussex County

Municipalities

Throughout 2024, OMC received many invitations to engage with municipalities including city and county councils seeking information on the current industry and what can be expected in the months or years to come. Such municipalities can make ordinance decisions pursuant to 4 *Del. C.* § 1351.

Fenwick Island	Georgetown	New Castle County
Seaford	Newark	Kent County Levy Court
Lewes	Wyoming	Sussex County Council
Milford	Camden	Wilmington City Council
Dover		

Chambers of Commerce

OMC received invitations from various chambers of commerce, including:

Central Delaware Chamber of Commerce
Lewes Chamber of Commerce
Delaware Black Chamber of Commerce
Delaware League of Local Governments

Delaware Technical Community College

To support the growing marijuana industry and the demand for qualified candidates, Delaware Technical Community College (Delaware Tech), OMC, and representatives from the Delaware Cannabis Industry Association collaborated to create a workforce development program. The program focuses on key aspects of marijuana education across all sectors of the industry. Delaware Tech will begin offering this program in May 2025.

Illicit Market v. Regulated Market: Testing Initiative

OMC collected samples of seized marijuana and marijuana products from Delaware State Police troops across the state to compare them with similar items in the regulated medical marijuana market. OMC's goal was to analyze the seized marijuana for common contaminants such as pesticides, heavy metals, and microbial agents, as well as to assess differences in cannabinoid profiles between regulated and illicit-market marijuana products. Dr. Jahan Marcu is reviewing the results and preparing an official report, which will undergo peer review.

Initial testing results show a concerning number of pesticides found in the illicit market samples including a growth regulator called "Pacllobutrazol" which is not registered for use on food crops and poses potential health risks. A substance called "Piperonyl Butoxide" was also found in the samples and is a synergist to pesticides and potentially toxic. "Imidacloprid" and "Thiacloprid" were also both found, and are used to control sucking insects, some chewing insects including termites, soil insects, and fleas on pets. "Imidacloprid" and "Thiacloprid" are banned in marijuana cultivation due to its potential toxicity and environmental impact. "Acetamiprid" – another neonicotinoid like Imidacloprid and Thiacloprid – was also found and is used to control a wide range of insect pests. It is prohibited in marijuana cultivation because of its harmful effects on non-target organisms and potential risks to human health. Finally, a fungicide known as "Myclobutanil" that is used to control powdery mildew and other fungal diseases was found. "Myclobutanil" is banned in marijuana cultivation because it can produce harmful compounds when heated, posing serious health risks.

The pervasiveness of the dangerous pesticides found in Delaware's illicit marijuana market underscores the importance of a well-regulated market.

Rules of the Office of the Marijuana Commissioner

Informal Posting

OMC took a unique approach to regulation drafting and invited stakeholders and interested parties to review and comment on the proposed regulations for the adult-use recreational marijuana industry in Delaware. The informal comment period was February 15, 2024, to March 29, 2024. The goal of this period was to enhance transparency and expedite the formal process. OMC received valuable feedback and applied significant changes to the proposed regulations before officially publishing them to the May 2024 Registrar of Regulations.

Formal Posting

After publishing proposed regulations in the May 2024 Registrar, OMC received additional valuable feedback leading to significant revisions. These revisions necessitated republishing the regulations for a second public comment period in July 2024. Following this additional public comment period, OMC made minor non-substantive adjustments and published the final version of the regulations on September 1, 2024. The State formally adopted the regulations on September 11, 2024.

Licensing

Standard Licenses

Legislation passed and signed into law July 17, 2024, allowed the implementation of the lottery selection process. This legislation was largely guided by the experiences of other states who faced litigation over competitive scoring processes and fairness, causing significant delays in their programs.

OMC worked diligently over the course of the year with the Department of Technology and Information (DTI) to develop an electronic application portal and accepted applications from August 19, 2024, through September 30, 2024, providing applicants an additional two weeks more than what was originally anticipated.

OMC received and processed 1,271 applications across various license categories. Of the applications received, 1,256 passed minimum qualifications and progressed to the lottery. Table 1 demonstrates the total eligible applications for each license category compared to the licenses available. Sections highlighted in yellow indicate that a drawing was not required because the number of eligible applications was less than or equal to the number of available licenses.

Due to the volume of applications, OMC conducted two separate lottery drawing events. OMC contracted with lottery machine provider SmartPlay and CPA firm Masters, Sidlow & Associates to conduct the lotteries. The first event occurred October 24, 2024, and included license categories Cultivation (Open, Micro, and Social Equity), Manufacturing (Open, Micro, and Social Equity), Lab testing (Open and Social Equity) and Social Equity Retail. The second event occurred December 19, 2024, for Open Retail licenses as this category had significantly more applications than any other license type and required additional time for thorough review to be completed. The selected applicants list is available in the Media Addendum in the corresponding press release.

Table 1: Applications Received and Licenses Available by License Type, Delaware, FY2024

OMC License Applications - Eligible 12/10/2024								
Paid Application License Types	Total Applications	Licenses Available	New Castle County		Kent County		Sussex County	
			Apps.	Available	Apps.	Available	Apps.	Available
01-Open Cultivation	95	20	37	9	31	4	27	7
02-SE Cultivation	100	10	44	5	27	2	29	3
03-Micro Cultivation	25	20	6	6	9	6	10	8
04-Open Manufacturer	61	10	27	5	20	2	14	3
05-SE Manufacturer	92	10	43	5	23	2	26	3
06-Micro Manufacturer	20	10	9	5	8	2	3	3
07-Open Retailer	529	15	210	7	151	3	168	5
08-SE Retailer	315	15	120	7	96	3	99	5
09-Open Testing Lab	2	3	1	1	1	1	0	1
10-SE Testing Lab	2	2	1	1	0	0	1	1
11-SE Micro Cultivation	15	10	5	5	4	2	6	3
Total (Applications Submitted & Paid)	1,256	125	503	56	370	27	383	42

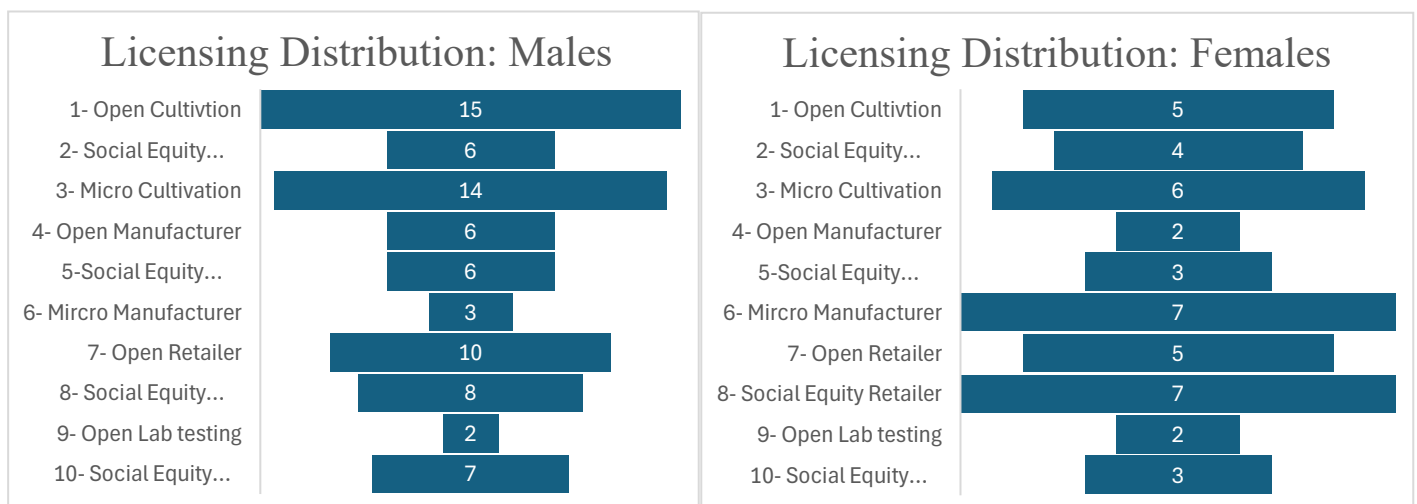
Source: Office of the Marijuana Commissioner Licensing Database, July 2024

After the lottery, selected applicants completed supplemental applications and prepared for financial and criminal background checks in pursuit of their conditional licenses. Three Open Manufacturer licenses (1 Kent County, 2 Sussex County), one Social Equity Manufacturer License (Sussex County), and one Social Equity Cultivation (Kent County), were forfeited by the selected applicants. These licenses will become available for a subsequent lottery in 2025.

Demographics

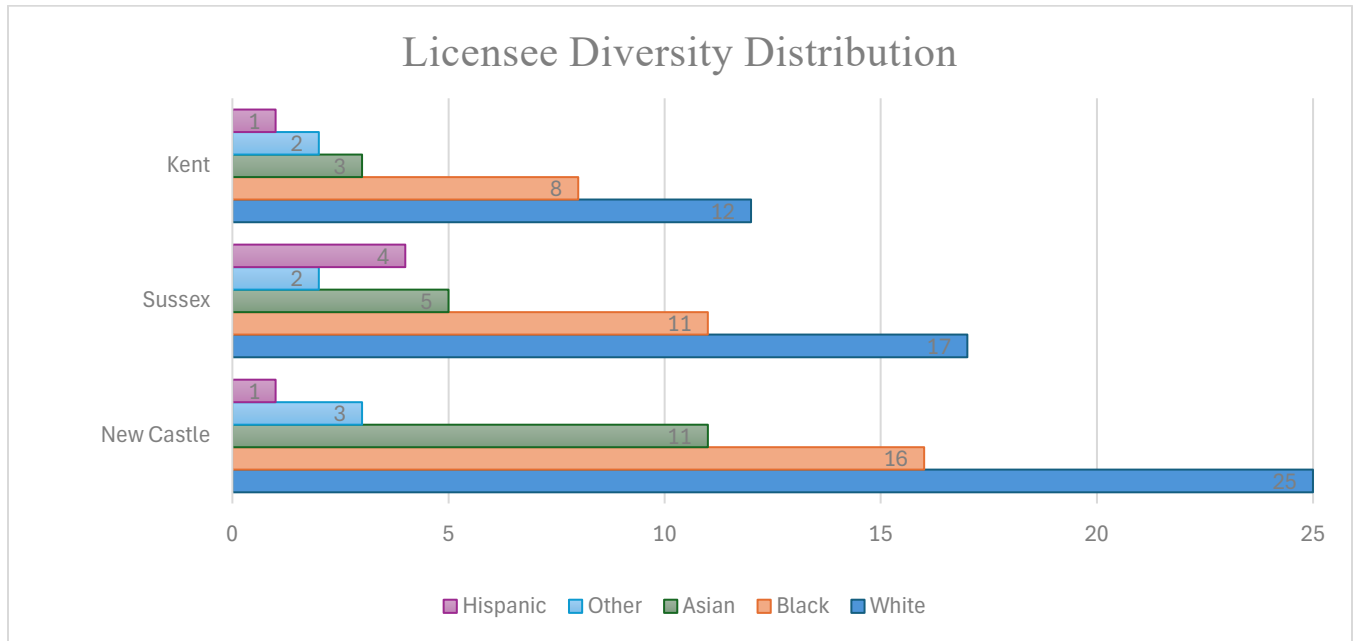
Resulting demographics of the lottery selections can be seen below:

Figure 1. New License Holder by Gender, FY2024



Source: Office of the Marijuana Commissioner Licensing Database, July 2024

Figure 2. New License Holder by Race per County, FY2024



Source: Office of the Marijuana Commissioner Licensing Database, July 2024

Revenue Generated

Through the license application process, OMC generated \$4.1 million in revenue, and an additional \$620,500 in license fees for the selected applicants.

Table 2: Revenue Generated by License Type, Delaware, FY2024

Application Fee Revenue	Proposed Business Location (county)			
	New Castle	Kent	Sussex	Grand Total
01 - Open Cultivation	\$185,000	\$155,000	\$135,000	\$475,000
02 - Social Equity Cultivation	\$46,000	\$29,000	\$31,000	\$106,000
03 - Micro Cultivation	\$18,000	\$27,000	\$30,000	\$75,000
04 - Open Manufacturer	\$135,000	\$100,000	\$70,000	\$305,000
05 - Social Equity Manufacturer	\$45,000	\$25,000	\$28,000	\$98,000
06 - Micro Manufacturer	\$27,000	\$24,000	\$9,000	\$60,000
07 - Open Retailer	\$1,050,000	\$755,000	\$840,000	\$2,645,000
08 - Social Equity Retailer	\$121,000	\$96,000	\$100,000	\$317,000
09 - Open Testing Lab	\$5,000	\$5,000		\$10,000
10 - Social Equity Testing Lab	\$1,000		\$1,000	\$2,000
11 - Social Equity Micro Cultivation	\$5,000	\$4,000	\$7,000	\$16,000
Grand Total	\$1,638,000	\$1,220,000	\$1,251,000	\$4,109,000

Source: Office of the Marijuana Commissioner Licensing Database, July 2024

Selected applicants were also required to submit payment of license fee. Open licenses are \$10,000 for a two-year license. Micro businesses and social equity licenses are discounted to 40% of an open license (\$4,000).

Table 3: Sum of License Fee by License Type, Delaware, FY2024

OMC License Type	Sum of License Fee
01 - Open Cultivation	\$172,500
02 - Social Equity Cultivation	\$34,000
03 - Micro Cultivation	\$20,000
04 - Open Manufacturer	\$70,000
05 - Social Equity Manufacturer	\$36,000
06 - Micro Manufacturer	\$40,000
07 - Open Retailer	\$150,000
08 - Social Equity Retailer	\$60,000
09 - Open Testing Lab	\$20,000
10 - Social Equity Testing Lab	\$8,000
11 - Social Equity Micro Cultivation	\$10,000
Grand Total	\$620,500

Source: Office of the Marijuana Commissioner Licensing Database, July 2024

Conversion Licenses

A significant challenge for OMC in 2024 was securing funding for social equity initiatives. Notably, the original legislation for the Marijuana Control Act did not contain a conversion license for the existing OMM establishments, which was tied to significant public opposition over whether the opportunity should be granted.

The 2024 legislative session of the 152nd General Assembly led to the passage of House Bill 408, establishing the conversion license. This required a one-time payment of a conversion license fee, with the funds earmarked to support the Social Equity Financial Assistance (SEFA) Grant. Licensees are permitted to make quarterly payments and are not required to pay for their retail licenses until 30 days before being advised they may sell adult-use recreational marijuana.

Table 4. Conversion Licenses Revenue, Delaware, FY2024

	Cultivation	Manufacture	Retail	Lab	Total	Revenue
FSC	2	2	2	0	6	\$800,000
Best Buds	1	1	3	0	5	\$600,000
Columbia Care	1	1	3	0	5	\$600,000
Farm	2	1	3	0	6	\$800,000
Fresh	2	1	3	0	6	\$800,000
Valor	1	1	1	0	3	\$400,000
Hightide	0	0	0	1	1	\$100,000
TOTALS	9	7	15	1	32	\$4,100,000

Source: Office of the Marijuana Commissioner Licensing Database, July 2024

Social Equity Licenses

Social equity licenses created under the enabling legislation, 4 *Del. C.* § 1336, facilitate participation in the regulated marketplace by individuals adversely affected by marijuana prohibition laws. Social equity license applicants must demonstrate that they resided in a disproportionately impacted area for 5 of the proceeding 15 years, and or, that the applicant or their immediate family member was convicted of a qualifying marijuana related offense.

DIA Map:

In accordance with 4 *Del. C.* § 1336, OMC collaborated with the Delaware Criminal Justice Information System (DELJIS) and DTI to collect and map 10 years of anonymized marijuana arrest data statewide, identifying areas most disproportionately affected. OMC also worked closely with local officials and law enforcement to refine these findings and more precisely define eligible areas. The resulting DIA Map was then made available on the website, allowing potential social equity applicants to check if they lived in a disproportionately impacted area for at least 5 of the past 15 years. The DIA Map can be found [here](#).

Social Equity Workshops:

In June 2024, OMC partnered with representatives from Delaware’s Division of Revenue, Delaware Cannabis Industry Association, Shore United Bank, Kiadii Harmon from Maron Marvel Bradley Anderson & Tardy LLC, and Nik Patel from Keller Williams Realty, Inc., to present workshops in each county and the City of Wilmington. The workshops took place at respective Delaware Tech campuses as well as the Dover Public Library (Kent County) to bring informative presentations and useful resources to potential social equity applicants. These events were well attended and livestreamed on the OMC Facebook page for those who could not attend in person. The workshop schedule and locations were advertised as seen below:

- 6/5/2024- Delaware Technical Community College (STANTON) (NEW CASTLE COUNTY)
- 6/12/2024- Delaware Technical Community College (OWENS) (SUSSEX COUNTY)
- 6/18/2024- Delaware Technical Community College (GEORGE)(WILMINGTON)
- 6/26/2024- Dover Public Library (KENT COUNTY)

Social Equity Validation Process:

Due to the significant volume of social equity applicants, OMC and the Division of Alcohol and Tobacco Enforcement (DATE) contracted with a third-party company, Creative Services, Inc. (CSI), to complete a social equity validation process. CSI previously worked in other states to complete the background and eligibility screening process for social equity applicants. The validation process began June 17, 2024, and was completed July 17, 2024. OMC received 591 submissions for validation, of which, only 261 individuals actively engaged in the portal.

Upon the conclusion of the social equity validation process, many individuals who missed the initial opportunity came forward expressing interest in confirming their eligibility. As a result, OMC extended the social equity validation process to September 5, 2024, to allow anyone interested to apply

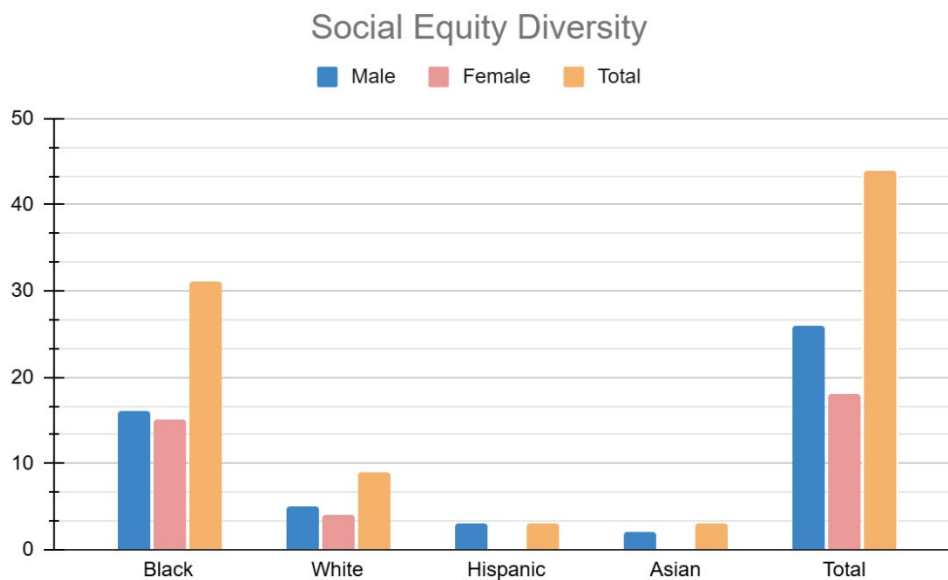
for a social equity license and confirm their eligibility through the license application process. OMC advised applicants that they must pay the non-refundable application fee to be validated and considered for the applicable license.

Social Equity Grant Program

In February 2024, OMC met with the Division of Small Business and the Criminal Justice Council to discuss strategy for a social equity grant. OMC’s goal was to develop a program framework to best manage funds received to support the program. Through successful legislative initiatives chartered by Representative Edward Osienski and Senator Trey Paradee, House Bill 408 created a conversion license process for medical marijuana establishments in Delaware to also serve the adult-use market. This legislation was signed into law July 17, 2024. The funds received in the conversion license process estimated to reach \$4.1M will be allocated to the Social Equity Financial Assistance (SEFA) Grant, in addition to \$2M designated to social equity assistance in the 2025 Bond and Appropriations Bill. Currently, there are no licensees actively receiving assistance while the grant program is still being established.

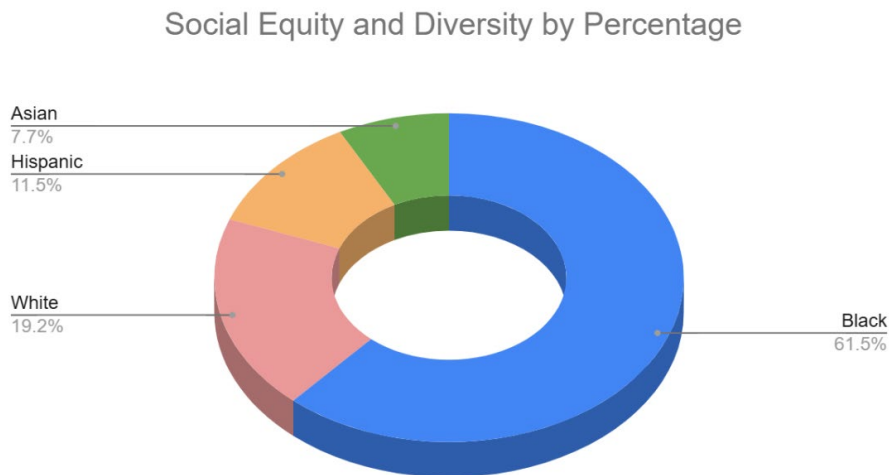
Social Equity Demographics

Figure 3. Gender and Race Distribution FY2024



Source: Office of the Marijuana Commissioner Licensing Database, July 2024

Figure 4. Race Distribution by Percentage, FY2024



Source: Office of the Marijuana Commissioner Licensing Database, July 2024

Medical Marijuana Program

The MMP is required by Title 16 Chapter 49A, §4922A (b)2 of the Delaware Medical Marijuana Act to detail the progression of the MMP including:

1. The number of applications and renewals filed for registry identification cards.
2. The number of patients and designated caregivers.
3. The nature of the debilitating medical conditions of the qualifying patients.
4. The number of registered identification cards revoked for misconduct.
5. The number of physicians providing written certifications for qualifying patients.
6. The number of registered compassion centers.
7. An accounting of fees and costs.

Under the Division of Public Health (DPH), the MMP previously shared its annual report over a fiscal year. Given that this is this first combined report since the merger of OMC and OMM, now referred to as MMP in July 2024, all data that follows in this section will reflect the calendar year.

Identification Cards: Applications and Renewals

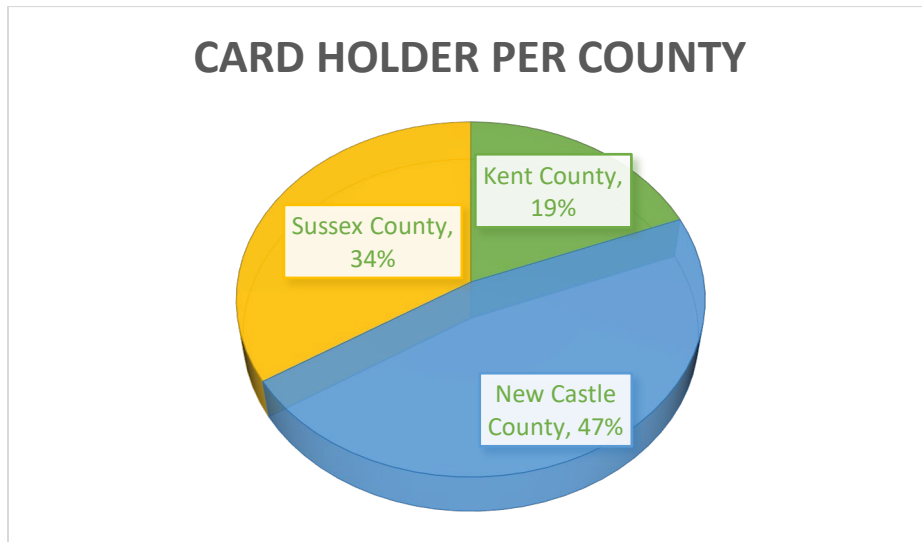
Table 4: Card Applications and Renewals by type, Delaware, FY2024

Cards Issued by Types 2024	CY24
Caregiver Application New	41
Caregiver Application Renewal	167
Employee Application New	69
Employee Application Renewal	218
Patient Application New	4166
Patient Application Renewal	11543
Pediatric Responsible Party Application New	3
Pediatric Responsible Party Application Renewal	4
Pediatric Application New	3
Pediatric Application Renewal	2

Source: Medical Marijuana Program Database, July 2024

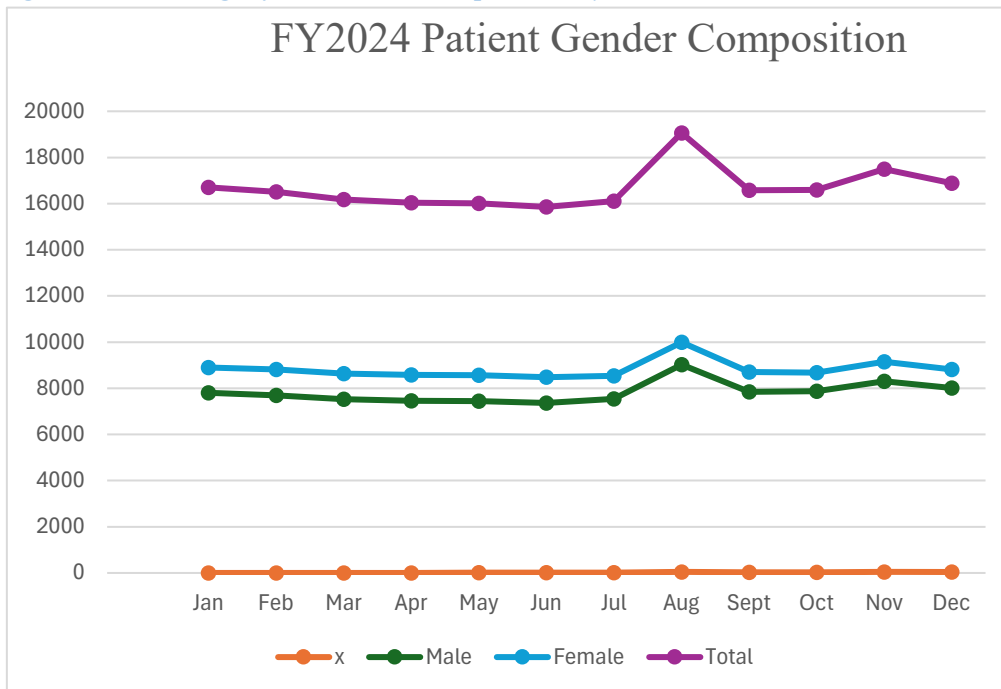
Patients & Designated Caregivers

Table 5. Percentage of Registration Card Holder per County, Delaware, FY 2024



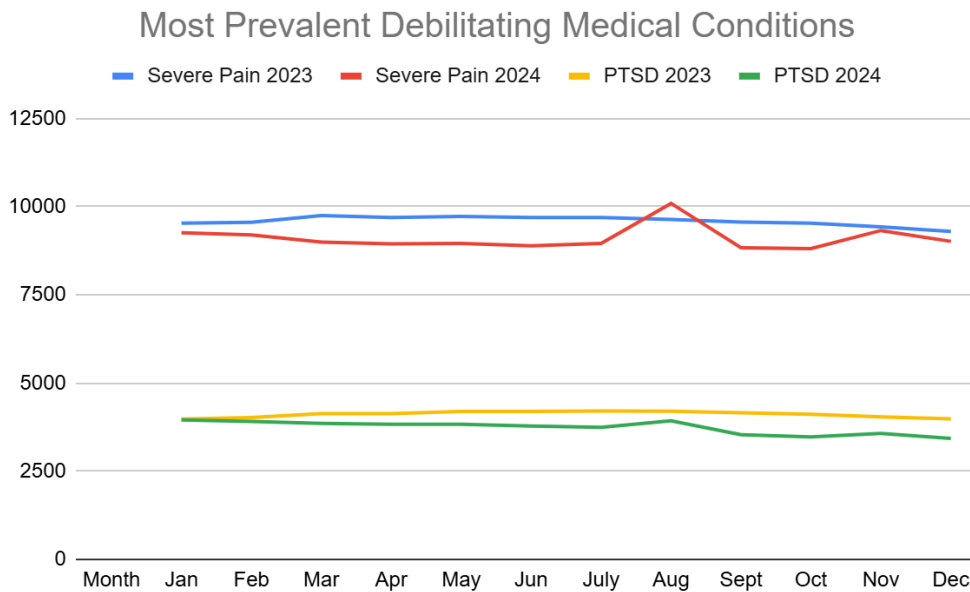
Source: Medical Marijuana Program Database, July 2024

Figure 5. Percentage of MMP Patient Population by Gender, Delaware, FY 2024



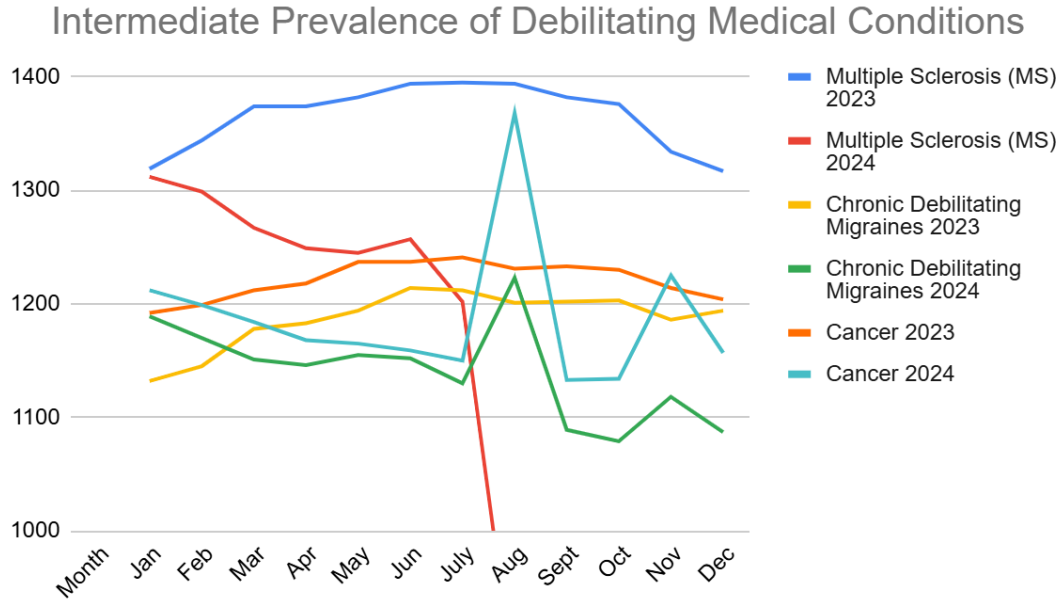
Source: Medical Marijuana Program Database, July 2024

Figure 6. Most Prevalent Debilitating Medical Conditions, Delaware, FY2023 and 2024



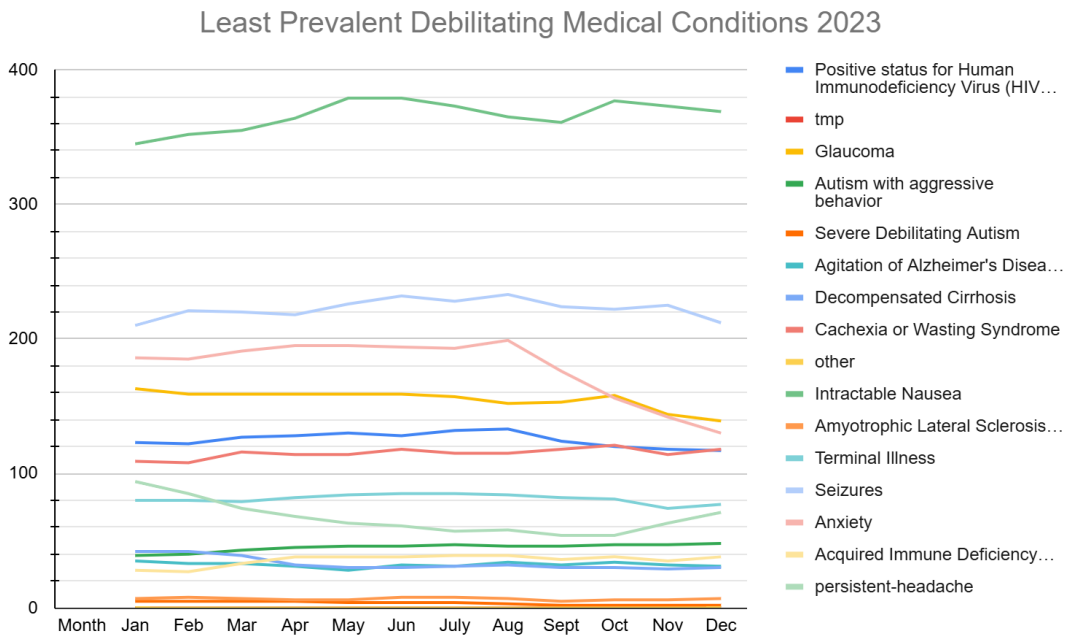
Source: Medical Marijuana Program Database, July 2023 and 2024

Figure 7. Intermediate Prevalence of Debilitating Medical Conditions, Delaware, FY2023 and 2024



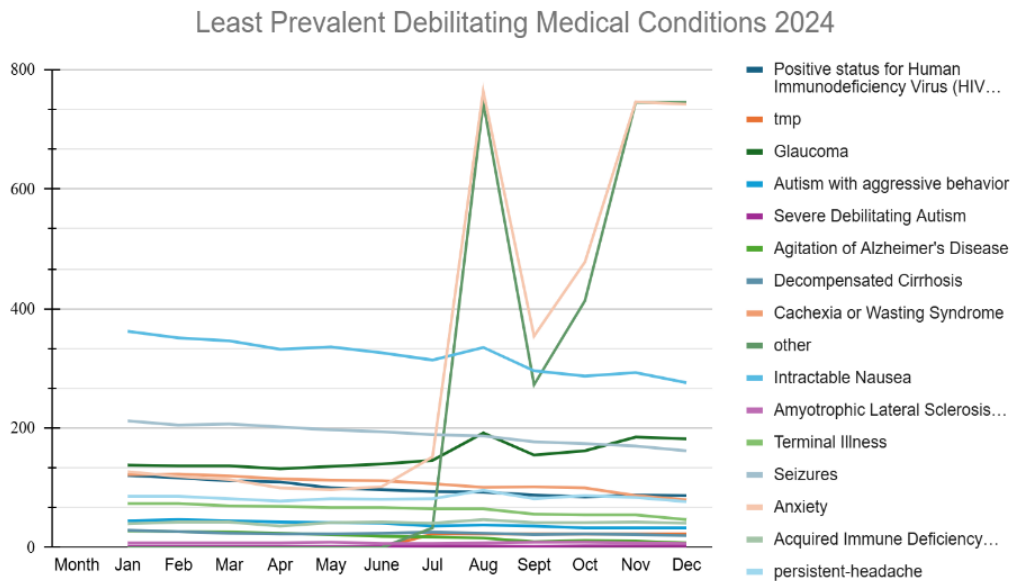
Source: Medical Marijuana Program Database, July 2023 and 2024

Figure 8. Least Prevalent Debilitating Medical Conditions, Delaware, FY 2023



Source: Medical Marijuana Program Database, July 2023

Figure 9. Least Prevalent Debilitating Medical Conditions, Delaware, FY 2024



Source: Medical Marijuana Program Database, July 2024

Compliance Activities

OMC must revoke the registry identification card of any cardholder who knowingly commits multiple or serious violations ([REF.:16 DE Code § 4919A \(2023\)](#)).

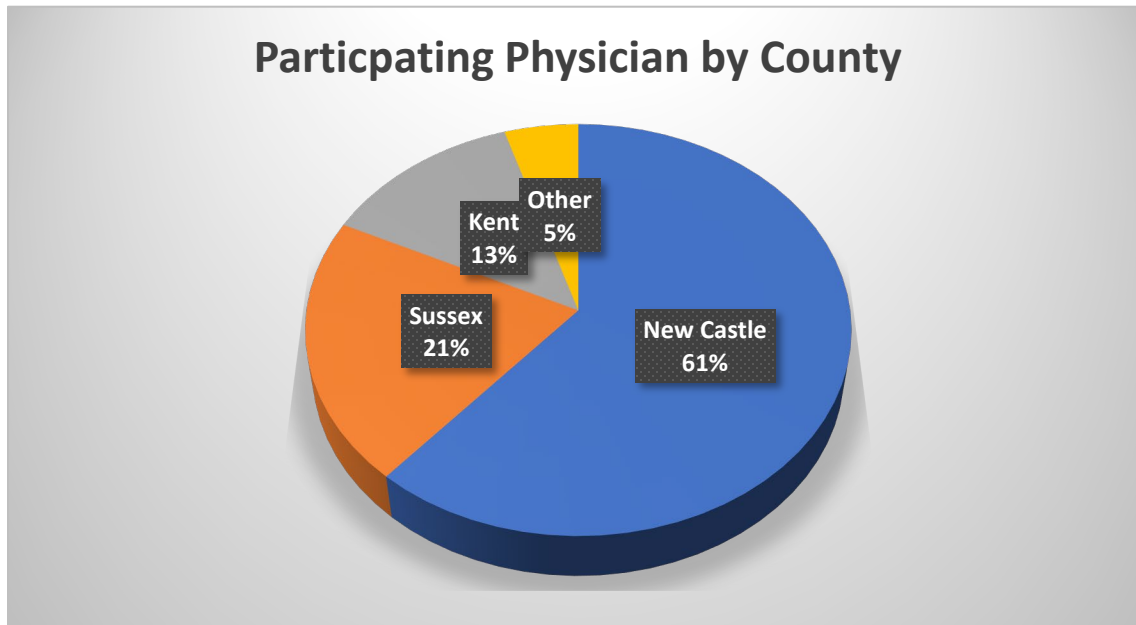
Unlike FY23 (one revoked patient card); OMM had zero (0) revoked patient cards in FY24. On the other hand, there were patients who never had their registry cards issued due to incomplete applications. The incomplete applications had one or more deficiencies and lacked requested application information; expired health care professional’s signature (only good for 90 days); payment absent; residential address on application did not match driver’s license, etc.

Participating Physicians

Applications must be reviewed and certified by a physician before they are submitted for review by OMM. Any MD (Medical Doctor) or DO (Doctor of Osteopathy), APRN (Advanced Practice RN), or PA (Physician Assistant) licensed to practice in Delaware is authorized to certify. The health care practitioner certification is valid for 90 days from the date of signature.

Of the participating medical professionals, 470 (61%) have offices in New Castle County, 159 (21%) have offices in Sussex County, 103 (13%) have offices in Kent County. There are another 40 (5%) medical professionals that practice in another state; however, they have Delaware license to practice. (Figure 10).

Figure 10. Participating Physicians by County, Delaware, FY2024



Source: Medical Marijuana Program Database, July 2024

Compassion Centers Currently Operating

Table 6. Medical Marijuana Program Retail Locations, Delaware, FY 2024

Location	Address	Town
Best Buds	516 Jefferies Blvd	Dover, DE
Best Buds	23 Georgetown Plaza	Georgetown
Columbia Care	5608 Concord Pike	Wilmington
Columbia Care	200 S. Dupont Hwy	Smyrna
Columbia Care	36725 Bayside Outlet	Rehoboth Beach
First State Compassion	37 Germay Dr.	Wilmington
First State Compassion	12000 Old Vine Blvd	Lewes
Fresh Delaware	800 Ogletown RD	Newark
Fresh Delaware	22982 Sussex Hwy	Seaford
Fresh Delaware	635 N DuPont Blvd	Milford
The Farm	105 Irish Hill Rd	Felton
The Farm	240 S. DuPont Hwy	New Castle
Field Supply	4555 Kirkwood Hwy	Wilmington

Source: Medical Marijuana Program Database, July 2024

Accounting of MMP Fees and Costs

Table 7. Medical Marijuana Program Revenue and Expenses, Delaware, FY2024

FY24	Revenue	Expense
Registration Card Application and Replacement Fees Paid	\$820,274	
Compassion Center Fees	\$200,000	
Total Revenue	\$1,020,274	
Employee Expenses		\$434,322
Travel		\$1,136
Contract and Professional Services (legal notices, etc.)		\$172,701
Maintenance and Supplies (software maintenance, card supplies)		\$23,257
IT Equipment and Software		\$32,000
State Personnel Charges		\$2,142
Total Program Expenses		\$665,558

Source: State of Delaware, First State Financials System (FSF)

Table 8. Medical Marijuana Program Revenue and Expenses, Delaware, FY2023

FY23	Revenue	Expense
Registration Card Application and Replacement Fees Paid	\$920,347	
Compassion Center Fees	\$360,000	
Total Revenue	\$1,280,347	
Employee Expenses		\$393,039
Travel		\$1,819
Contract and Professional Services (legal notices, etc.)		\$169,771
Maintenance and Supplies (software maintenance, card supplies)		\$28,415
IT Equipment and Software		\$30,826
State Personnel Charges		
Total Program Expenses		\$623,870

Source: State of Delaware, First State Financials System (FSF)

Sales Data

OMC is using MMP sales as a benchmark for the adult-use market. In 2024, total marijuana sales under MMP were \$44,866,015 with smokable flower contributing to 53% of sales. Marijuana sales in a vape cartridge format was 28% of sales and products in an edible format were about 14% of market sales.

Contrasting sales from 2023, over all medical marijuana sales in 2024 dropped by \$8.65M which is 16% with flower, vape and edible formats having comparable losses. The loss in sales can be attributed to patients not renewing their patient cards and going to neighboring states for marijuana purchases.

Capacity

Since all medical marijuana businesses converted to prepare for the adult-use market, there is a notable increase in capacity and inventory. In 2023, Delaware processed 73,795 plants. In 2024, in anticipation for the adult-use market, Delaware cultivators processed 88,755 plants, a 20% year over year increase. The inventory for bulk marijuana storage increased 41% year over year. This is a combination of declining sales and increased production to meet forecasted demands when the adult-use market opens.

The marijuana producers increased the number of strains in production from 324 in 2023 to 362 in 2024. Additionally, there are more strains at retail, in 2023 there were 133 different strains in medical marijuana retail locations. In 2024, that number increased to 169 different strains.

Federal Legislative Landscape

The current federal marijuana initiative is focused on two main items: rescheduling and banking.

Rescheduling

The Department of Justice (DOJ) proposed rescheduling marijuana from Schedule I to Schedule III under the Controlled Substances Act (CSA). This proposal follows a recommendation from the Department of Health and Human Services (HHS) after a review of marijuana's medical use and potential for abuse.

Banking

The Secure and Fair Enforcement (SAFE) Banking Act aims to protect financial institutions that serve marijuana-related businesses (MRBs). This bill has been introduced in various forms over the years but has yet to be passed into law. Currently, banks and financial institutions face legal risks when providing services to MRBs due to marijuana's Schedule I status. This lack of access to traditional banking services forces many MRBs to operate on a cash-only basis, making them vulnerable to crime and hindering their growth.

Conclusion

OMC's work in 2024 reflects a year of growth and transition, marked by legislative successes, strategic stakeholder engagement, and a focus on inclusivity through social equity measures. These initiatives have laid the foundation for a robust and well-regulated marijuana industry in Delaware, with an emphasis on fairness, safety, and public health. Looking forward, OMC will continue to refine its processes, support social equity applicants, and ensure compliance within the evolving marketplace.

MEDIA ADDENDUM

OMC is proud to reflect on a year of significant milestones and continued dedication to fostering a well-regulated cannabis industry. In 2024, OMC advanced its mission by streamlining licensing processes, expanding educational outreach, and implementing measures to enhance equity and transparency. OMC launched the social equity eligibility validation process and DIA Map to promote inclusivity and protect against predatory practices related to social equity licenses. Looking forward, OMC remains committed to innovation, collaboration, and equity-driven policy refinement to ensure a thriving and sustainable framework that benefits all stakeholders.

Press releases in order:

[Office of the Marijuana Commissioner \(OMC\) is accepting public comment for Informal Regulation Review until March 29 - State of Delaware News](#)

[The Office of the Marijuana Commissioner \(OMC\) has released additional sections of the informal draft regulations. - State of Delaware News](#)

[The Office of the Marijuana Commissioner released additional sections of the informal draft regulations for review. - State of Delaware News](#)

[The Office of the Marijuana Commissioner Has Published the Official Proposed Regulations. - State of Delaware News](#)

[Office of Marijuana Commissioner Opens Social Equity Workshop Registration - State of Delaware News](#)

[The Office of the Marijuana Commissioner launched the Social Equity Eligibility Validation Application and DIA Map - State of Delaware News](#)

[Warning: Be Cautious of Predatory Practices related to Social Equity Licenses - State of Delaware News](#)
[OMC Receives More than 1,000 Applications for Licenses and Prepares for the Lottery Process - State of Delaware News](#)

[Office of the Marijuana Commissioner: Licensing Lottery - State of Delaware News](#)

[OMC Provides Update on License Lottery and Selected Applicants for Delaware's Marijuana Industry - State of Delaware News](#)

[Office of the Marijuana Commissioner \(OMC\) Open Retail License Lottery - State of Delaware News](#)

[Office of the Marijuana Commissioner \(OMC\) Conducts Lottery for Open Retail Licensing - State of Delaware News](#)

[OMC Provides Update on Open Retail License Lottery and Selected Applicants for Delaware's Marijuana Industry - State of Delaware News](#)

[Marijuana Commissioner Steps Down - State of Delaware News](#)

External Media Stories

Delaware Live: Jarek Rutz 2/7/2024 (*This article had inaccuracies, but Keila R. Montalvo reached out to the Director George Rotsch and provided the accurate information to make corrections*).

[Marijuana laws come with price tag for 2 state departments \(delawarelive.com\)](#)

Delaware Public Media (DPM): Sarah Petrowich, 2/8/2024

[State pushes plans to open recreational marijuana retailers into 2025 | Delaware First Media \(delawarepublic.org\)](#)

Marijuana Moment: Kyle Jaeger 2/12/ 2024

[Delaware Adult-Use Marijuana Shops Will See Delayed Launch Timeline, Top Regulator Says - Marijuana Moment](#)

Delaware Public Media (DPM): Sarah Petrowich 2/21/2024

[Office of the Marijuana Commissioner announces cannabis industry training program at Del Tech | Delaware First Media \(delawarepublic.org\)](#)

Coast TV: Charles Reinert 2/26/2024

[Marijuana Commissioner brings recreational pot discussions to Georgetown town council | News | wrde.com](#)

Delaware Public Media: Sarah Petrowich, March 1, 2024 <https://www.delawarepublic.org/show/the-green/2024-03-01/delawares-road-to-launching-a-recreational-marijuana-industry>

The Daily State News: Glenn Rolfe, 03/01/2024

[Delaware marijuana commissioner: Program targets black market | Bay to Bay News](#)

Delaware Online.com: Xerxes Wilson, 3/5/2024

[Here are Delaware's most influential people in law in 2024 \(delawareonline.com\)](#)

WHYY: Cris Barrish, 03/06/2024

[Delaware weed stores will have the chance to offer 'deli-style' sales - WHYY](#)

Marijuana Moment: Kyle Jaeger 3/11/2024 (*Media coverage of the latest press release from Keila R. Montalvo on the Informal Regulations process*).

[Delaware Officials Release Third Round Of Draft Rules For Marijuana Testing, Disposal And More As State Works To Launch Legal Market - Marijuana Moment](#)

WRDE:

[New marijuana industry regulations up for review in Delaware | News | wrde.com](#)

WBOC: Kristina DeRobertis, 3/14/2024

[Delaware explores deli-style marijuana sales ahead of recreational market launch | Latest News | wboc.com](#)

WHYY: Cris Barrish , 3/20/2024

[High marks for ex-top cop Rob Coupe as Delaware weed czar - WHYY](#)

Office of the State Treasurer (OST): Deputy Treasurer Jordan Seemans and HB355.

[Delaware Treasurer Promotes New Marijuana Banking Bill To Provide State-Level Protections - Marijuana Moment](#)

Cannabis Business Times: Tony Lange, 4/22/2024

<https://www.cannabisbusinesstimes.com/news/delaware-adult-use-cannabis-sales-launch-regulations-licenses-lottery/>

Coast TV: Charles Reinert, 04/26/2024

[https://www.wrde.com/news/marijuana-commissioner-gives-presentation-to-lewes-city-council/article_916521d8-0370-11ef-8d41-](https://www.wrde.com/news/marijuana-commissioner-gives-presentation-to-lewes-city-council/article_916521d8-0370-11ef-8d41-974a682742c5.html?utm_medium=social&utm_source=email&utm_campaign=user-share)

[974a682742c5.html?utm_medium=social&utm_source=email&utm_campaign=user-share](https://www.wrde.com/news/marijuana-commissioner-gives-presentation-to-lewes-city-council/article_916521d8-0370-11ef-8d41-974a682742c5.html?utm_medium=social&utm_source=email&utm_campaign=user-share)

Delaware Business Times: Regulations, Jennifer Antonik, 5/3/2024

<https://delawarebusinesstimes.com/news/delaware-marijuana-regulations/>

Cape Gazette: Bill Shull ,5/7/2024. (*It had a misquote that Keila addressed in an email to the reporter*).

[State marijuana czar briefs Lewes council | Cape Gazette](#)

Delaware Public Media: Regulations in the Registry and our Social Equity Workshops Sarah Petrowich,

[Recreational marijuana market pushes forward with new regulations and social equity workshops | Delaware First Media \(delawarepublic.org\)](#)

Green Market Report: John Schroyer, 5/14/2024

[Delaware cannabis regulators release proposed adult-use industry rules \(greenmarketreport.com\)](#)

Hemp Gazette: Terry Lassitenaz 5/19/2024

<https://hempgazette.com/news/cannabis-delaware-legalisation-hg2221/>

WHYY: Conversion License Article, Sarah Mueller 5/21/24.

[Delaware cannabis advocates oppose new licensing bill - WHYY](#)

Delaware Business Now: Conversion License article, John Schroyer 5/20/24

[My take: This bill would let medical weed stores into the recreational marijuana party - Delaware Business Now](#)

Marijuana Moment: Conversion License article, 5/20/24

[Delaware Marijuana Sales Could Launch This Year Under New Bill To Allow Dual Licenses For Medical Cannabis Operators - Marijuana Moment](#)

WBOC: Reporter Kristina DeRobertis 5/22/2024

[Delaware Legislation May Allow Medical Dispensaries to Sell Recreational Weed | Latest News | wboc.com](#)

High Times: Reporter Nicole Potter 5/22/2024

[Delaware Bill Would Allow Medical Cannabis Operators To Sell Adult-Use Cannabis \(hightimes.com\)](#)

Delaware Online: Amanda Fries 5/23/2024

[Social equity workshops set for aspiring marijuana business owners \(delawareonline.com\)](#)

Delaware Public Media: Sarah Petrowich 5/27/2024

<https://www.delawarepublic.org/politics-government/2024-05-27/delaware-lawmakers-look-to-allow-medical-marijuana-dispensaries-to-sell-recreationally>

Marijuana Moment: Tom Angell 5/28/2024

<https://www.marijuanamoment.net/delaware-governor-signs-bill-to-expand-medical-marijuana-access-by-letting-doctors-recommend-it-for-any-condition/>

Marijuana Moment: article covering the passing of HB408 in the House

[Marijuana Moment HB408](#)

Cape Gazette: Chris Flood,

[Cape Gazette OMC SE Workshop](#)

WHYY: Cris Barrish, 6/24/2024

<https://whyy.org/articles/delaware-marijuana-licenses-prior-convictions-grow-sell-legally/>

Delawareonline: Amanda Fries, 7/3/2024

<https://www.delawareonline.com/story/news/2024/07/03/delaware-recreational-marijuana-social-equity-license-scam-target/74289882007/>

Delaware Public Media: Sarah Petrowich, 7/4/2024

[Marijuana Commissioner warns of predatory practices as social equity validation deadline approaches | Delaware First Media \(delawarepublic.org\)](#)

[Delaware First Media \(delawarepublic.org\)](#)

Bezinga: 7/5/2024

[The Clock is Ticking On Delaware Gov. Carney Cannabis Adult Use - Bezinga](#)

WBOC: Kristina DeRobertis, 7/8/2024

https://www.wboc.com/news/dover-could-enact-90-day-moratorium-on-recreational-weed-sales/article_54b113e2-3d6c-11ef-99c2-dfd56cf62070.html

WBOC: Kristina DeRobertis, 7/8/2024

https://www.wboc.com/news/dover-could-enact-90-day-moratorium-on-recreational-weed-sales/article_54b113e2-3d6c-11ef-99c2-dfd56cf62070.html

WHYY: Cris Barrish, 7/9/2024

<https://whyy.org/articles/delaware-retail-weed-industry-social-equity-licensees/>

Cannabis Business Times: Tony Lange, 7/18/2024

[Bill to Expedite Delaware's Adult-Use Cannabis Sales Launch Now in Governor's Hands - Cannabis Business Times](#)

Cape Gazette: 7/18/2024

<https://www.capegazette.com/article/marijuana-czar-speak-lewes-july-18/278106>

Cape Gazette: Bill Shull, 07/18/2024.

<https://www.capegazette.com/article/state-marijuana-czar-talks-legal-weed-lewes/278444>

The Journal of the DE Bar Assoc: DAG Adria Martinelli

[July-August2024DSBABarJournal.pdf](#)

Marijuana Moment: Kyle Jaeger, 8/8/2024

[Delaware Officials Will Start Accepting Adult-Use Marijuana License Applications Ahead Of Schedule This Month - Marijuana Moment](#)

WDEL: Mark Fowser, 8/12/2024

[Del. soon opens marijuana business license application process | The Latest from WDEL News | wdel.com](#)

Philadelphia Inquirer: Henry Savage, 8/16/2024

[Applications for Delaware's recreational marijuana industry open Aug. 19 \(inquirer.com\)](#)

Cape Gazette: Bill Shull 8/18/2024

<https://www.capegazette.com/article/lewes-bans-retail-sales-marijuana/279421>

COAST TV: Kristina DiRobertis interviewed Keila Montalvo, 08/20/2024.

[Legal marijuana business applications open Monday in Delaware | News | coasttv.com](#)

Cape Gazette: 9/17/2024

[State's marijuana czar to address Sept. 17 summit in Dover | Cape Gazette](#)

[Delaware marijuana czar details fast-moving license plans \(delawarelive.com\)](#)

Cape Gazette: Melissa Steele, 9/20/2024

[Application period open for state's recreational marijuana industry | Cape Gazette](#)

Delaware Business Times: Katie Tabelaing, 10/03/2024.

[Experts: Delaware's recreational marijuana process takes even approach \(delawarebusinesstimes.com\)](#)

Marijuana Moment: Kyle Jaeger, 10/03/2024.

[Delaware Officials Receive More Than 1,200 Applications For Marijuana Business Licenses, 'Substantially' More Than Expected Ahead Of Market Launch - Marijuana Moment](#)

Delaware Online: Shane Brennan , 10/07/2024

[Delaware sees over 800 applications for marijuana retail licenses \(delawareonline.com\)](#)

Green Market Report: John Schroyer, 10/07/2024.

[Delaware receives more than 1,200 marijuana business license applications \(greenmarketreport.com\)](#)

Delaware Public Media: Sarah Petrowich, 10/09/2024

[Applications to enter Delaware's recreational marijuana market exceed availability tenfold | Delaware First Media \(delawarepublic.org\)](#)

Hemp Gazette: Steven Gothrinet 10/11/2024

[Delaware Marijuana Business License Progress \(hempgazette.com\)](#)

Green Market Report: Adam Jackson, 10/16/2024.

[Delaware governor signs cannabis banking protection bill \(greenmarketreport.com\)](https://www.greenmarketreport.com)

Spotlight Delaware.org: Brianna Hill emailed with Keila, 10/15/2024

[Wilmington debates where marijuana dispensaries could open - Spotlight Delaware](#)

WHYY News: Cris Barrish, 10/23/2024.

[Bans, restrictions curb number of Del. cannabis stores - WHYY](#)

Marijuana Moment: Kyle Jaeger, 10/23/2024.

[Delaware Officials Will Hold First Marijuana License Lottery This Week Ahead Of Adult-Use Market Launch - Marijuana Moment](#)

MJBiz Daily: MJBiz Daily Staff, 10/24/2024

[Delaware awards adult-use permits for marijuana cultivation, manufacturing](#)

Cape Gazette: Chris Flood, 10/24/2024

<https://www.capegazette.com/article/state-marijuana-office-conducts-licensing-lottery/282865>

Green Market Report: Adam Jackson, 10/25/2024

<https://www.greenmarketreport.com/delaware-awards-first-adult-use-cannabis-licenses-in-state-lottery-drawing/>

Delaware First Media: Sarah Petrowic, 10/27/2024

<https://www.delawarepublic.org/politics-government/2024-10-27/portion-of-marijuana-businesses-licenses-announced-wilmington-punts-on-zoning-regulations>

Delaware Public Media: Sarah Petrowich, 11/11/2024

Marijuana business license winners announced, retail license lottery set for December | Delaware First Media

Delaware Online: Reporter Amanda Fries, 12/2/2024

Legal weed in Delaware: Debunking misconceptions about new industry

Delaware Public Media: Sarah Petrowich, 12/03/2024

[Marijuana retail license lottery date set, NCC considers marijuana zoning ordinance | Delaware First Media](#)

WBOC: Megan Summers, 12/03/2024

[Marijuana Advocates in Delaware Calling for Sussex County Ordinance Change | Latest News | wboc.com](#)

Coast TV: Madeline Overturf 12/08/2024

Milford weighs three options on recreational marijuana sales in town | News | coasttv.com

WDEL: Sean Greene, 12/11/2024

[New Castle County Council approves guidelines for recreational marijuana store locations | The Latest from WDEL News | wdel.com](#)

Delaware Online: Molly McVety, 12/11/2024

[New Castle County to limit where retail marijuana stores can set up](#)

Delaware Spotlight: Brianna Hill, 12/12/2024.

[Delaware marijuana businesses face fewer options after city bans](#)

The Marijuana Herald: Anthony Martinelli, 12/13/2024

[Delaware: 529 Applicants Advance to Delaware Marijuana Retail License Lottery, to Take Place December 19](#)

The Marijuana Herald: Anthony Martinelli, 12/18/2024

[Delaware: Second Marijuana Licensing Lottery Set for Tomorrow](#)

WDEL- Reporter Mark Fowser on 12/18/2024 covering the Lottery

[What is the next step in creating Delaware's legal marijuana industry? | The Latest from WDEL News | wdel.com](#)

WBOC: Tiffani Amber, 12/19/2024

[WBOC News at 6 - December 19, 2024 | Latest Newscasts | wboc.com](#)